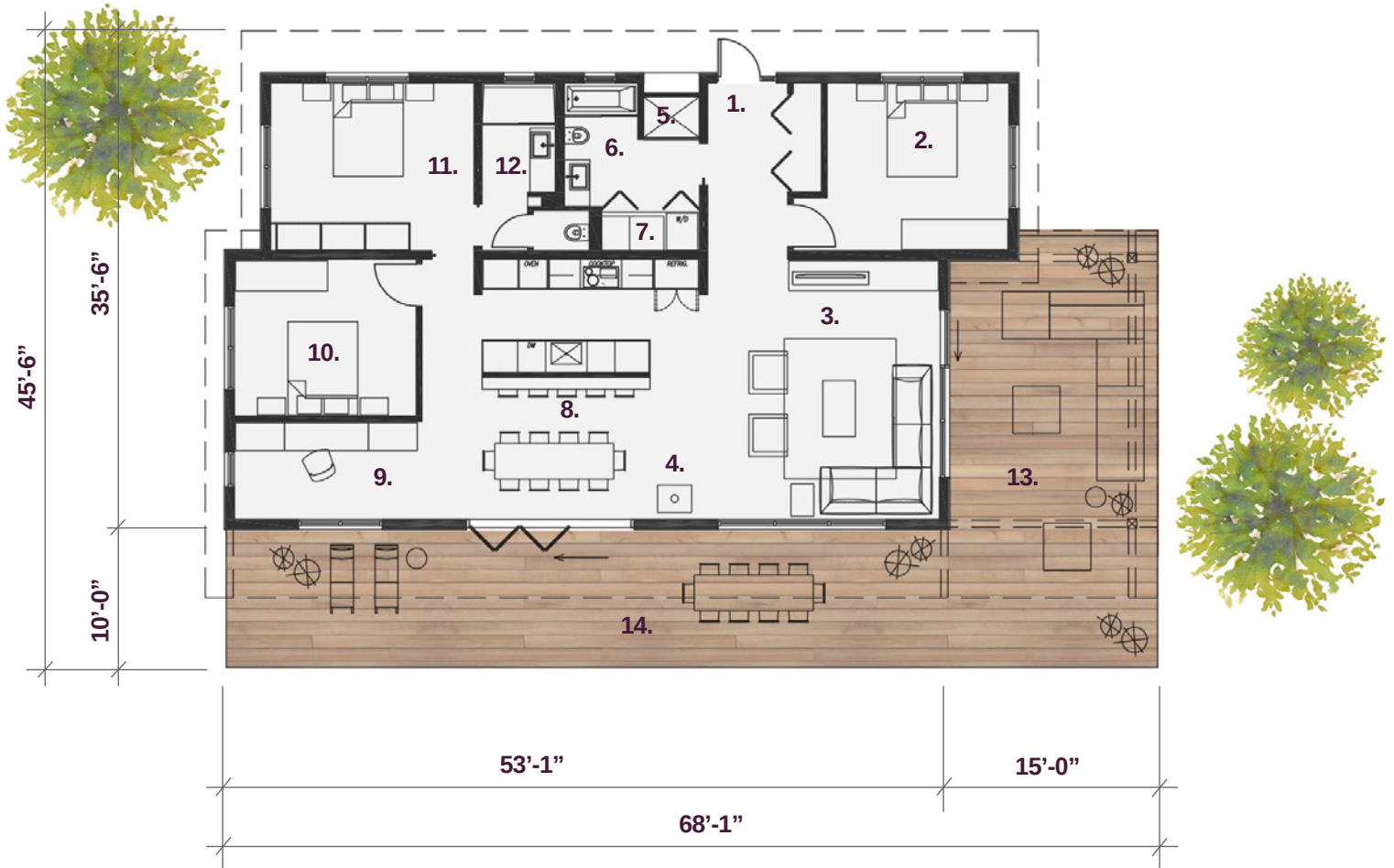


Origin Series / Design B.3 / Medium



Floor Plan / *Note: Plans can be mirrored or rotated to fit your site*

- | | |
|--------------------------------|---------------------------------------|
| 1. Entry | 8. Kitchen / Dining Room / 18'6 x 20' |
| 2. Bedroom 1 / 12' x 13' | 9. Home Office / 7' x 13' |
| 3. Living Room / 18'6 x 17' | 10. Bedroom 2 / 11' x 13' |
| 4. Optional Wood-Burning Stove | 11. Master Bedroom / 12' x 15' |
| 5. Utility Core | 12. Master Bath |
| 6. Bath | 13. Covered Porch |
| 7. Laundry | 14. Uncovered Porch |



Origin Series / Design B.3 / Medium



Home Details /

1,600 sq ft of living space

3 bedrooms

2 baths

Large covered outdoor space, connected to Great Room by folding window-wall

Designed to achieve Zero Net Energy performance

Overall Dimensions: 68'1 x 42'6

Options /

Passive house rated wood burning stove

Add a second folding window-wall

1-or-2 car garage

Open or enclosed cabana

PV panels for electric vehicle charging

Standard Product Lines:

Poliformi

Miele

DURAVIT

SAMSUNG
SmartThings

FIRECLAY TILE

nebia

LG

